



TECHNICAL RIDER - WEX - P3

Address

Wallonie Expo S.A.
Parc d'activités du WEX
Rue des Deux Provinces, 1
B_6900 Marche-en-Famenne (Belgique)
Tel: +32 84 340 800
Fax: +32 84 340 809
Website: www.wex.be

CEO

Gabriel CATANIA

Managing Director

Laurent BRIOU
laurent@wex.be
Mobile : +32 493 51 31 83

Sales Director

Rudy GODART
rudy@wex.be
Mobile : +32 498 52 59 25

Artistic Coordination

Véronique LOUYS
veronique@wex.be
Mobile : +32 492 72 91 60

Stage-Manager

Jean Marc CLOSJANS
regie@wex.be
Mobile : +32 475 78 05 14

WEX CAPACITY

Total capacity allowed : 6.000 pax depending on Hall configuration

Option 1:

3.531 seats - all seated

- 2.089 chairs level 0
- 50 seats for disabled people
- 1.162 stand seats
- 216 bleachers seats

Option 2:

5.838 seats - level 0 standing + stand + bleachers seated

- 4.500 people level 0
- 50 seats for disabled people
- 1.058 stand seats
- 216 bleachers seats

Option 3:

6.000 people - all standing + 216 bleachers seats

TECHNICAL AREA

Scenic space: 54 m x 14 m

Width on stage frame: 25 m

Stage dimensions:

- Width 24,84 m
- Depth 12,42 m
- Height 1,25 m (seated) or 1,50 m (standing)

Admissible load: 500 kg/m²

20 risers of 2 x 1 m adjustable height of 20 cm to 1 m

Access :

- Loading dock behind the stage, sectionnal door
- Access direct to stage center
- 2 doors permitting truck access to the Hall, stage left-stage right, each 3m wide and 4m high

Rigging :

Truss dimensions

- Width 24,50 m
- Depth 12 m
- Hung up by 24 motors of 1 metric ton
- Admissible charge of 20 metric ton

Sound hang up fixtures adjustable depending on stage gap

Height of stage cage: 16 m

Height of clearance: 13 m

Height hall: 8,17 m underneath beam

Video :

2 large screens (3,6 x 2,4 m)

- 1 stage left and one stage right

- with 6.500 lumen projectors

Electricity :

Electrical box on stage right for lighting: Maximum 400 Ampères

- on screw terminal block
- or 250 A on powerlock + 2 x 125 A P17

Electrical box on stage left for sound: Maximum 250 Ampères

- on screw terminal block
- or 2 x 125 A P17

Underground cable through to the central controls

Decoration :

- Backdrop black flannel
- 4 drop plans Italian or German style
- Drop cloth black flannel

Miscellaneous :

Platform in the back of the hall in the center for the follow-spots

Acoustic isolation on the walls (black cork)

Electric concealment

Hall lighting: 9 flood lights on DMX512 dimmer

3 platforms

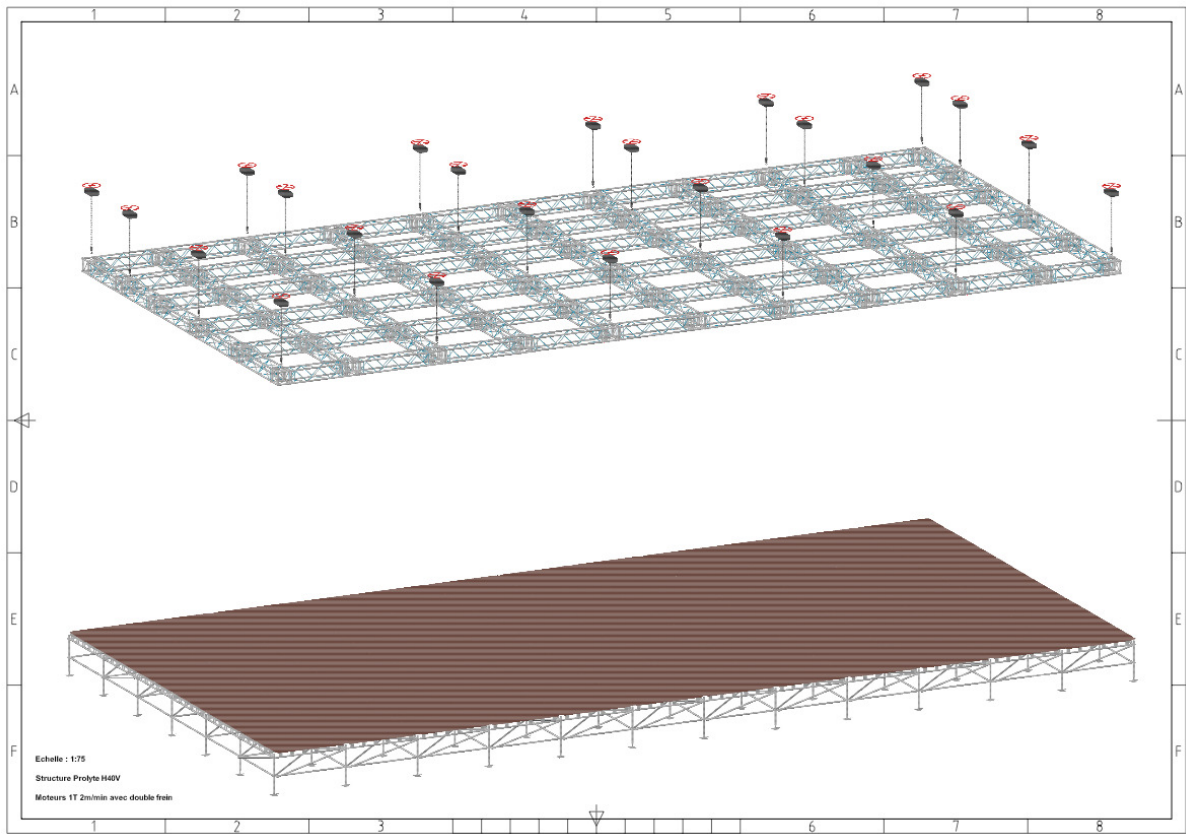
- Electrical UPRIGHT 14 m on stage
- Telescopic 10 m
- Sizzor

2 Elevators

- Telescopic
- Admissible charge of 2 metric ton

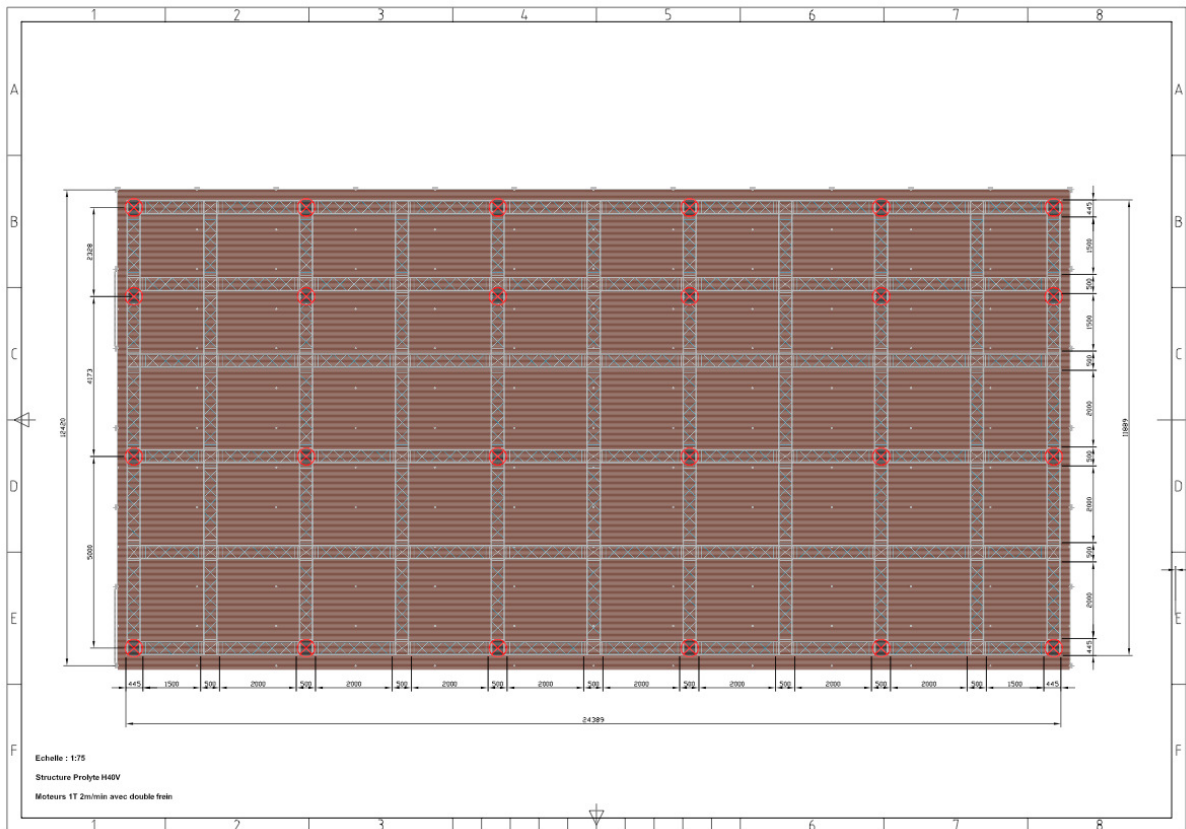
Security alarm in all WEX Halls

PLANS



3D view ↑

Top View ↓



PRODUCTION HOSPITALITY

Dressing rooms :

The WEX has 6 dressing rooms + 2 sanitary blocks

- 1 production office
- 2 dressing rooms with sanitary (artists)
- 3 basic dressing rooms

Catering area also available near the dressing rooms.

Wifi Internet network accessible in every dressing room.

PUBLIC HOSPITALITY

Parking :

The WEX offers parking space for 3.000 cars.

A parking area of 40 parking spaces is at disabled people's disposal.

The whole parking area is only open and accessible on show and exhibition days.

It is entirely lighted.

Reception Hall:

In Hall 2 of WEX a reception area is at disposition before, during and after the concerts.

This area is equipped with:

- Sanitary blocks
- Bar arear
- Catering area

Possibility to install a merchandising area in this hall.

SECURITY RULES

The electric installations, connectors and cables, the mechanic installations, structures and motors external of WEX have to conform to the standards and norms in force in Belgium. The approval certificate and the compliance with the law must be made available to the WEX.

Any manipulation of the load above the staff is strictly forbidden. The crew working on stage has to be equipped with equipment complying with the standards and norms of security in force.

Only staff duly empowered and authorized has the right to make interventions or manipulations in the electrical boxes, of the truss or the stage.

Smoking is not allowed inside the WEX.

Press-photographers only can get access to the Front-Stage and this after asking for an authorization which must be accepted by the Artist's Production. At the end of the authorized service they have to leave the allowed area and go back to the public area.

Flashes are not allowed.

Only the Stage-Manager of the WEX has the right to authorize the extinction of the hall. He must first receive verbal agreement of the person in charge of Security. In a force majeure case, he has also the right to relight a security lighting during the show.

Sound power is limited to 101 dB weighted A.